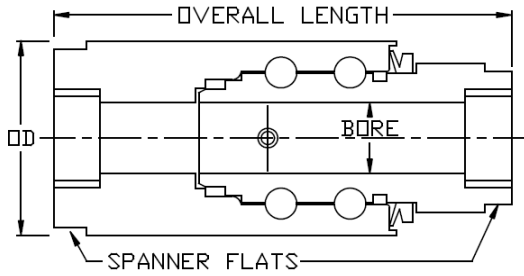




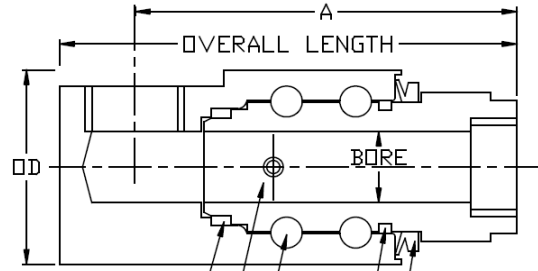
# FS SERIES

1/4" to 1" Stainless Steel Swivels to 410Bar(6,000PSI)

Style 1 (Straight)



Style 2 (90 degree)



HIGH PRESSURE MAIN SEAL  
GREASE NIPPLE  
DOUBLE BALL BEARING DESIGN  
OPTIONAL IP 68 SUBMERGE SEAL  
LOW TORQUE DUST SEAL IP 64

**FEATURES:**

- 316 stainless steel construction for high corrosion resistance
- Seal and bearing designed to withstand high pressure.
- Double ball race design withstands loads in all directions
- Submerged modification available if unit are to be immersed.
- Ball bearing design requires less torque to turn than solid bearing design when under load.

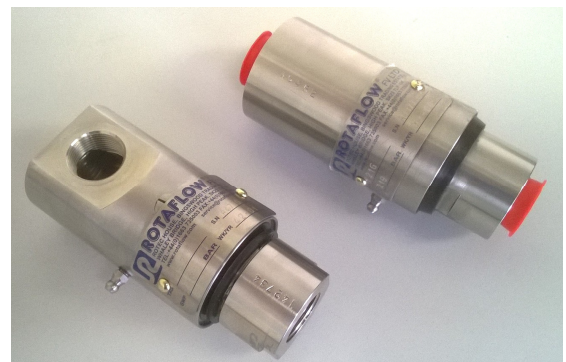
BORE (mm)	THREAD BSPP	SIZE REF.	OVERALL LENGTH	OVERALL DIAMETER	A	MAX. PRESSURE
6	1/4"	6	100	47	85	410 BAR
10	3/8"	10	100	47	85	410 BAR
12	1/2"	12	100	47	85	410 BAR
22	3/4"	20	139	60	116	300 BAR
22	3/4" Style 1	20	135	60	-	410 BAR
22	3/4" Style 2	20	150	60	125	410 BAR
22	1"	25	139	60	116	300 BAR
22	1" Style 1	25	135	60	-	410 BAR
22	1" Style 2	25	150	60	125	410 BAR

These swivels have female threads at both ends as standard. Please enquire about any alternative threads which you may require. The swivel is made from 316L Stainless Steel, with 420 grade Stainless Steel Bearings. Standard seal types are listed below.

Standard threads are BSPP female, other thread types on application

Standard seal materials include Nitrile, Flouorocarbon (Viton®) and PTFE

Viton® is a registered trademark of DuPont Dow Elastomers.



For larger sizes please view our SK series brochures.

Also available in Hard Carbon Steel from our 'F' series Catalogue - Our low cost range, (1/4" to 2")

Copyright © 2016 Rotaflow FV LTD

**Rotaflow FV Limited**

Rotec House, Bingswood Trading Estate, Whaley Bridge, High Peak, SK23 7LY  
www.rotaflow.com tel:+44(0)1663 735003 fax:+44(0)1663 735006  
email:sales@rotaflow.com

Tech Spec:  
121/170714  
Page 1 of 1