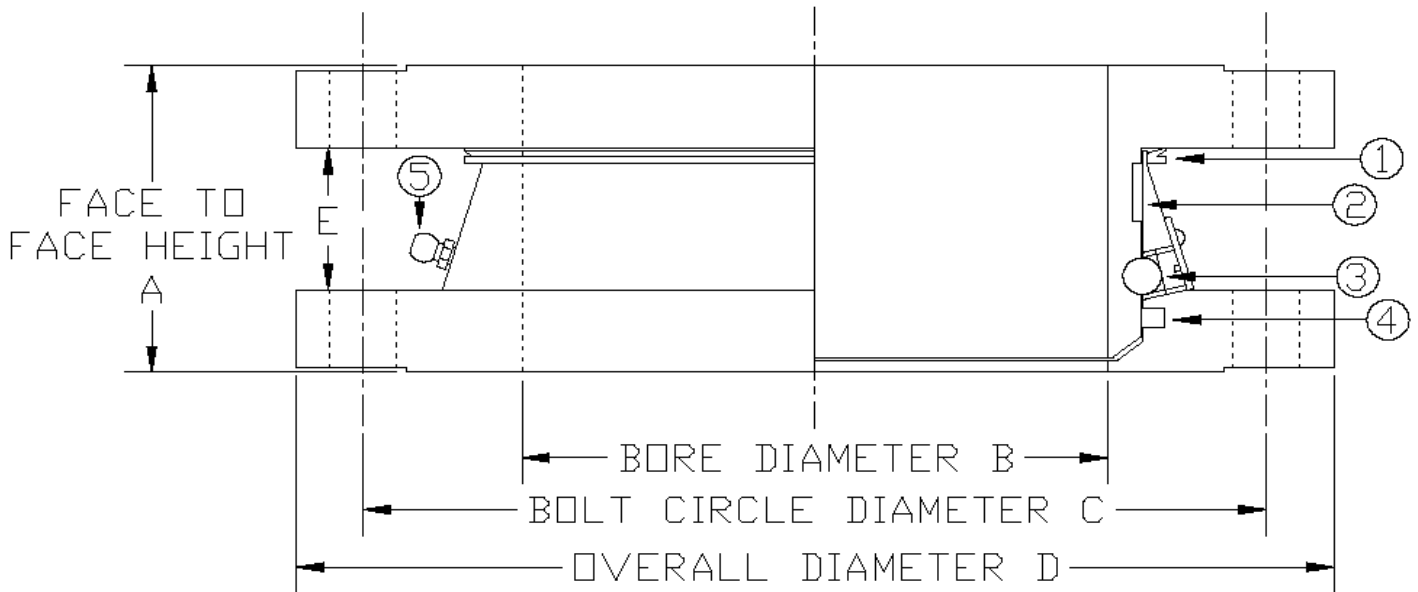




COMPACT DUTY SWIVEL JOINTS

2" TO 12" ASME 150 FLANGED



1. Dust seal, keeps the dirt out and allows grease purging to clean the bearing area.
2. Needle roller bearing, very high load capacity, keeps the main bearing and seal perfectly aligned.
3. Full compliment ball bearings, high load capacity, balls are installed through a single hole so that it is virtually impossible for swivel to separate in service.
4. Main seal, Standard Nitrile rubber is one of the best wearing rubbers, other materials available include fluorocarbon and PTFE.
5. Regreasable, regular greasing will purge contaminates from the bearing area to give a long service life.

Nominal size	Flange Face to Face Height	Bore Diameter	Bolt Circle Diameter	Number of Bolt Holes	Diameter of Bolt Hole	Overall Diameter	Length Between Back of Flanges
	A	B	C			D	E
2"	68	49	121	4	19	152	30
3"	78	74	152	4	19	191	30
4"	82	97	191	8	19	229	34
5"	94	122	216	8	22	254	37
6"	95	146	241	8	22	279	44
8"	106	194	298	8	22	343	49
10"	110	247	362	12	25	406	50
12"	118	298	432	12	25	483	54

All dimensions in mm unless otherwise stated, tolerance ± 0.5

Please check clearance for nuts between flanges

Copyright © 2016 Rotaflow FV LTD

Rotaflow FV Limited

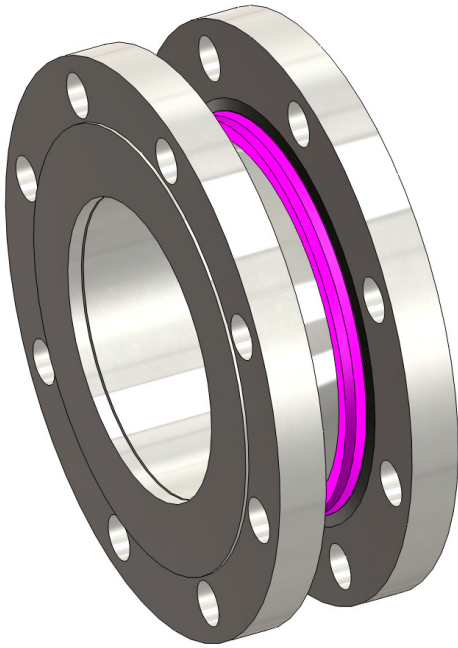
Rotec House, Bingswood Trading Estate, Whaley Bridge, High Peak, SK23 7LY
 www.rotaflow.com tel:+44(0)1663 735003 fax:+44(0)1663 735006
 email:sales@rotaflow.com

Tech Spec:
 108/161020
 Page 1 of 2



COMPACT DUTY SWIVEL JOINTS

2" TO 12" ASME 150 FLANGED



- Carbon steel and 316 Stainless steel versions available.
- Other flange sizes available on application.
- Exceptionally low height

We provide a design service for difficult applications. Please call us to discuss your application.

Nominal size	Max Radial Load	Max Axial Load	Max Bending Load	Max Pressure Slow Rotating
	kN	kN	Nm	Bar (PSI)
2"	2	9	30	10 (150)
3"	3	12	44	10 (150)
4"	6	25	94	10 (150)
5"	7	30	165	10 (150)
6"	8	36	188	10 (150)
8"	10	45	289	10 (150)
10"	16	75	428	10 (150)
12"	20	91	618	10 (150)

Please note the stated maximum loads can not be combined.

If you require a higher load capacity, please refer to our SK series swivel joints, or alternatively feel free to contact our sales department for high load applications.

Rotaflow provide a refurbishing service with a speedy turnaround of joints



Copyright © 2016 Rotaflow FV LTD

Rotaflow FV Limited

Rotec House, Bingswood Trading Estate, Whaley Bridge, High Peak, SK23 7LY
www.rotaflow.com tel:+44(0)1663 735003 fax:+44(0)1663 735006
 email:sales@rotaflow.com

Tech Spec:
 108/161020
 Page 2 of 2