

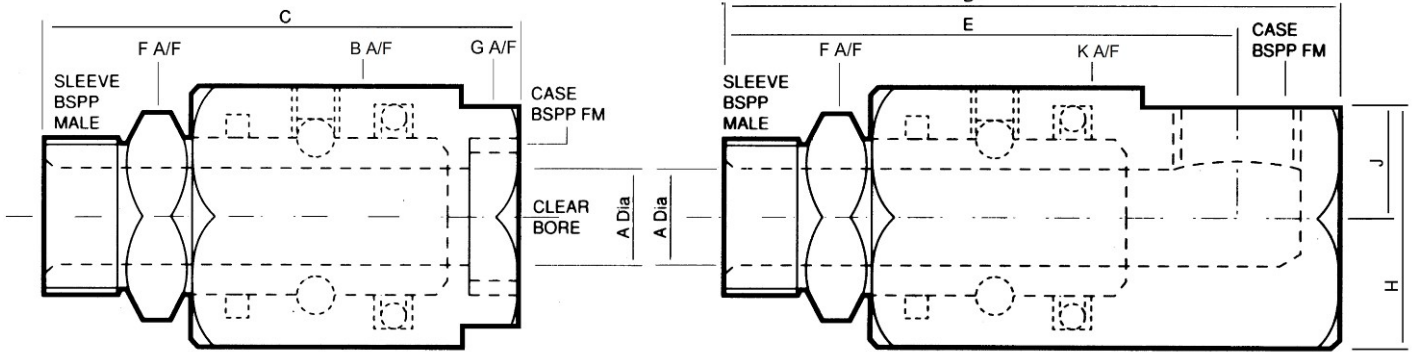


F SERIES SWIVEL JOINTS

1/4" to 2" Swivels

Style 1

Style 2



Common Dimensions					Style 1 (Straight) mm					Style 2 (90 Degree) mm					
Thread BSPP	Size ref	Bar	Max. RPM	Bore A Dia.	F	B	C	G	Wt (Kg)	K	D	E	H	J	Wt (Kg)
1/4"	6	300	40	6	19	30 A/F	63	24	0.20	30 A/F	71	60	28	13	0.24
3/8"	10	250	40	8	24	34 A/F	66	28	0.26	34 A/F	77	62	33	15	0.4
1/2"	12	250	40	11	27	36 A/F	71	32	0.35	40 Dia	87	70	35	15	0.50
3/4"	20	210	25	15	32	50 Dia	90	45	0.80	50 Dia	105	87	42	18	0.90
1"	25	170	17	20	41	55 Dia	98	50	0.92	60 Dia	120	95	52	22	1.35
1 1/4"	32	SEE	15	28	50	60 Dia	102	55	1.10	63 Cast	122	92	84	52	1.58
1 1/2"	40	PAGE	12	35	55	70 Dia	111	65	1.50	78 Cast	142	104	101	63	2.76
2"	50	2	8	44	70	80 Dia	117	75	2.00	86 Cast	151	108	107	65	3.4

ORDERING DETAILS: Please indicate one option from each column.

E.g. F2-25-1-1 relates to F series, 90° style 1" nominal bore, Nitrile seal, Threaded BSPP male to female.

SERIES	STYLE	SIZE (mm)	Thread size	SEAL	END TYPE
F	1. (STRAIGHT)	06	1/4"	1. NITRILE	1. BSPP THREAD
	2. (90 DEGREE)	10	3/8"	3. EPR	
		12	1/2"	4. FLUOROCARBON (VITON®)	
		20	3/4"	5. PTFE	
		25	1"		
		32	1 1/4"		
		40	1 1/2"		
		50	2"		

Viton® is a registered trademark of DuPont Dow Elastomers.



Please Enquire About Specials:

Alternative materials—316SS
 Custom built applications:
 High Pressure, Hygienic duty,
 Multiflow, Low torque.
 Large Bore applications to 30" NB

For larger sizes please view our SK series brochures. Also available in Stainless Steel from our 'FS' series Catalogue - (1/4" to 2")

Copyright © 2016 Rotaflow FV LTD

Rotaflow FV Limited

Rotec House, Bingswood Trading Estate, Whaley Bridge, High Peak, SK23 7LY
 www.rotaflow.com tel:+44(0)1663 735003 email:sales@rotaflow.com

Tech Spec:
 107/011121
 Page 1 of 2



F SERIES SWIVEL JOINTS

1/4" to 2" Swivels

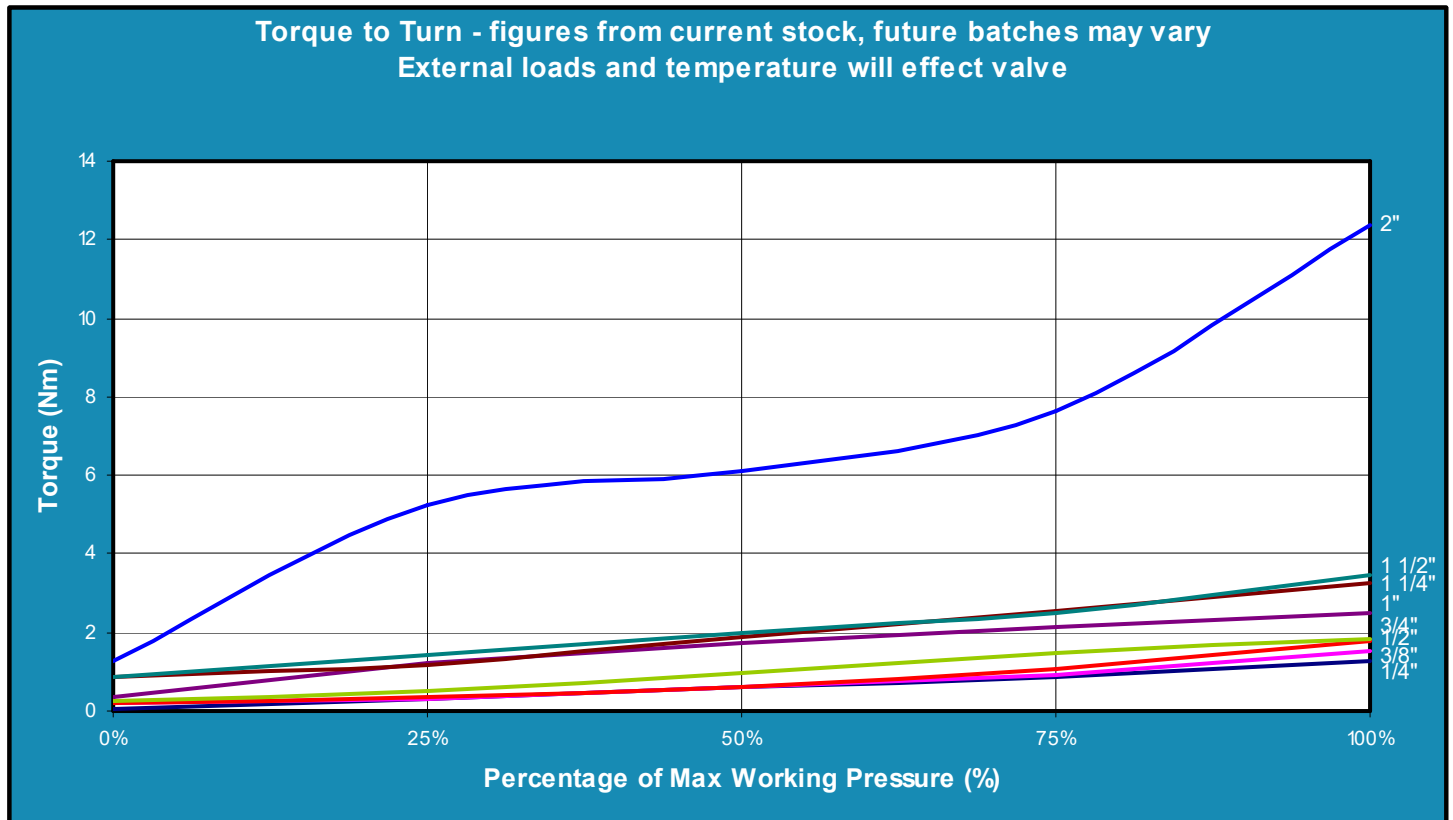
PED - Pressure Equipment Directive category

Maximum working pressure for SEP compliance

Hazard	Liquid		Gas	
	Low	High	Low	High
1/4"	SEP up to maximum working pressure			
3/8"				
1/2"				
3/4"				
1"				
1 1/4"	130 bar	63 bar	130 bar	0.5 bar
1 1/2"	110 bar	53 bar	26 bar	0.5 bar
2"	90 bar	40 bar	20 bar	0.5 bar

The F series swivel joints are designed and manufactured to comply with the SEP category within PED. This limits the working pressures dependant on the grade of medium to flow through the swivel as tabulated above.

Products supplied within the SEP category will not have a CE marking.



Please Enquire About Specials:

Alternative materials—316SS Custom built applications: High Pressure, Hygienic duty, Multiflow, Low torque.
Large Bore applications to 30" NB

For larger sizes please view our SK series brochures.

Also available in Stainless Steel from our 'FS' series Catalogue - (1/4" to 2")

Copyright © 2016 Rotaflow FV LTD

Rotaflow FV Limited

Rotec House, Bingswood Trading Estate, Whaley Bridge, High Peak, SK23 7LY
www.rotaflow.com tel:+44(0)1663 735003 email:sales@rotaflow.com

Tech Spec:
107/011121
Page 2 of 2